

ARTFULLY CRAFTED & INSTALLED



ARCHITECTURAL  
GARDENS





CREATE





*entertain*







RELAX





*fire*  
& HEARTH





*visualize*

**A CUSTOM COLOR PALETTE**





*design*  
**for WOW factor**





FORM

*function*





*energy*  
& FLOW





*inspire*  
+ INTELLIGENT





# *Chef Inspired* **+ ORGANIC**





*alfresco* DINING



COOL  
*products*  
EXPERT  
*advice*

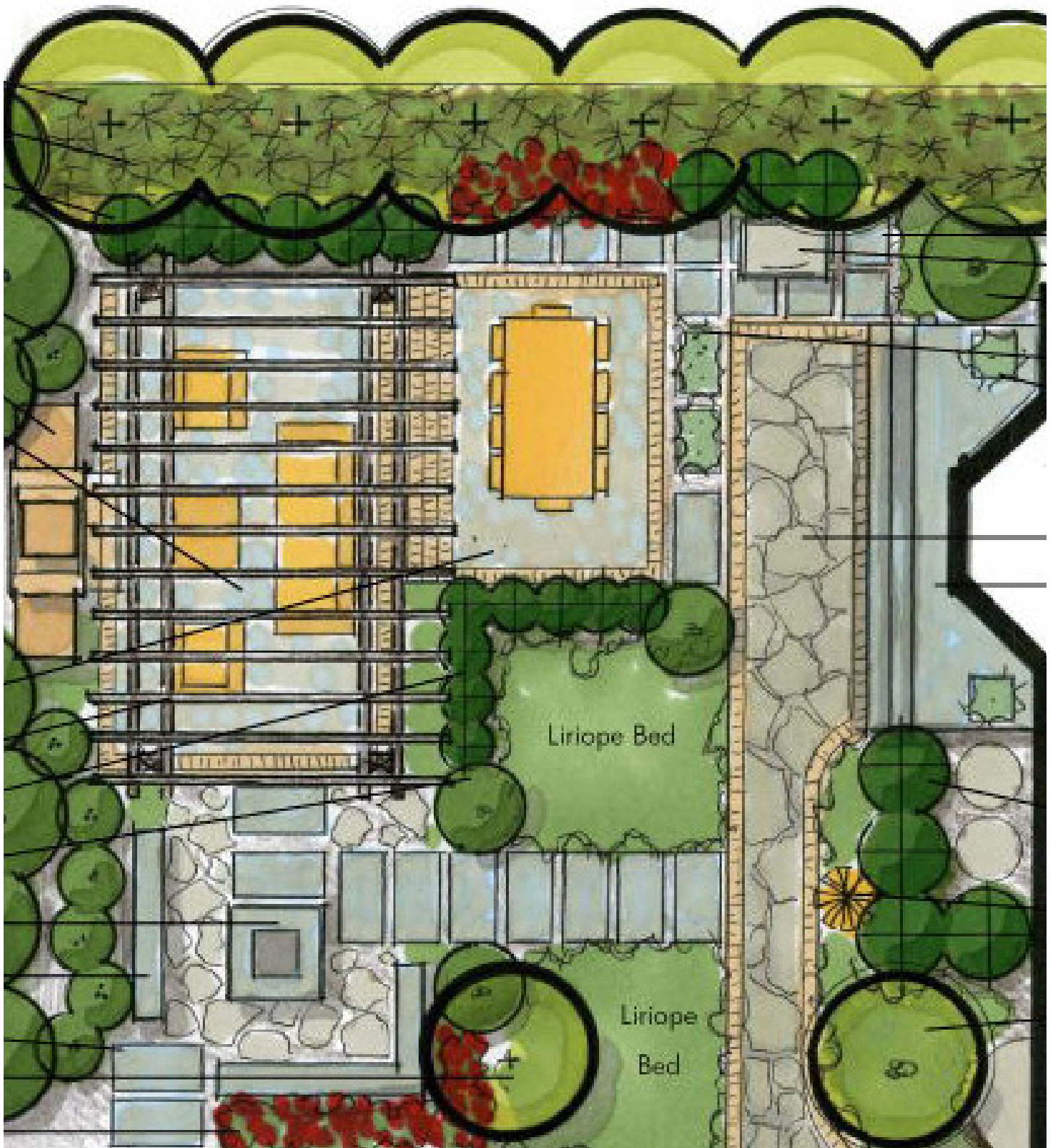
*illuminate*  
YOUR SANCTUARY





*award*  
**WINNING**





*featured*  
IN MAGAZINES &  
PUBLICATIONS





*rock solid*

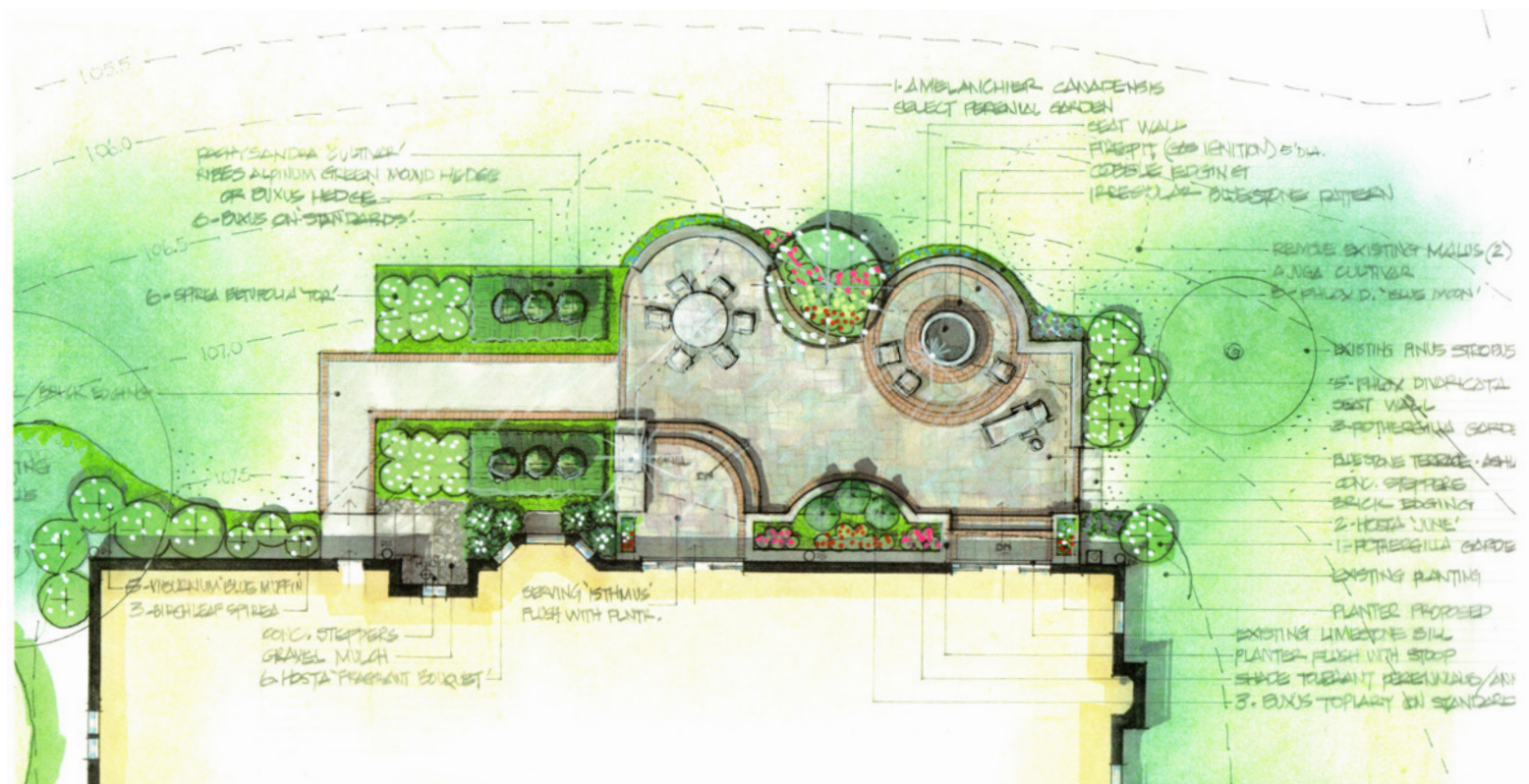
**WARRANTIES**





*glorious*  
**OUTDOOR SPACES**













*welcome*  
**HOME**



# FULL SERVICE LANDSCAPE DESIGN & INSTALLATION

- LANDSCAPE ARCHITECTURE
- LANDSCAPE CONSTRUCTION
- THOUGHTFUL PRICING
- FULL WARRANTIES
- PATIOS, WALKWAYS & BRICK DRIVEWAYS
- BLUESTONE & CLAY PAVERS
- STONE SEAT WALLS & FINE MASONRY
- HAND SELECTED & HARD TO FIND PLANTS
- OUTDOOR KITCHENS & FIREPLACES
- LED LANDSCAPE LIGHTING
- A+ RATING BETTER BUSINESS BUREAU



ARCHITECTURAL  
GARDENS





ARCHITECTURAL  
GARDENS

SINGLE SOURCE  
DESIGN + BUILD



It's more than a design... it's a lifestyle.

847.691.7345

ARCHITECTURALGARDENS.COM